

Young Children Experiencing Homelessness Updates from Early Childhood Development, HHS

Marsha Basloe

Office of Early Childhood Development
Washington, DC

**NAEHCY Conference
October 30, 2017**

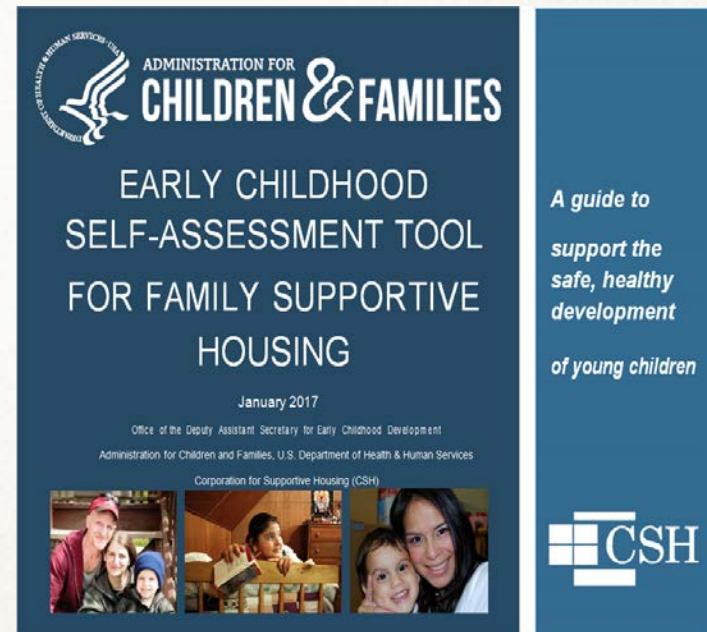
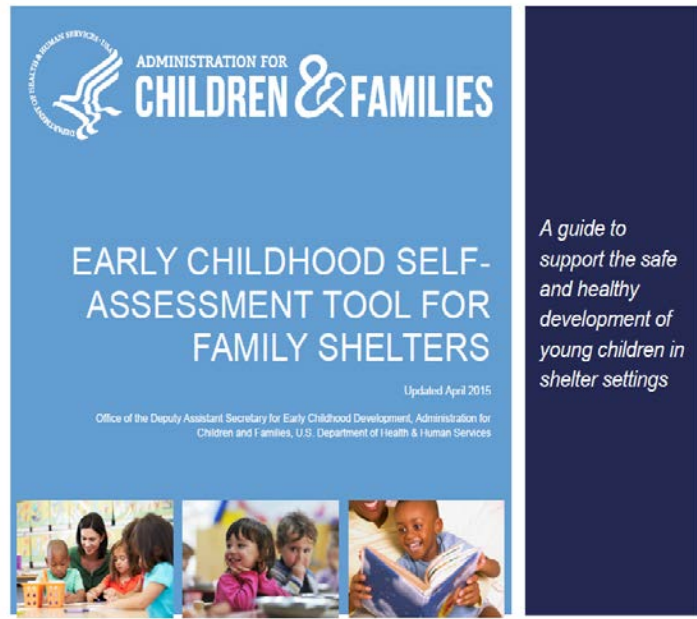


2017: A Focus on Early Childhood Homelessness

- New E.C. Self Assessment Tools
- Head Start Performance Standards Implementation
- Child Care Development Block Grant Reauthorization & CCDF Rule implementation
- 50-State Profile updated
- Research on Child and Family Homelessness



Early Childhood Self-Assessment for Family Shelters & Family Supportive Housing



Self-Assessment Tool for Early Childhood Programs Serving Families Experiencing Homelessness



This Self-Assessment Tool for Early Childhood Programs Serving Families Experiencing Homelessness has been specifically designed for child care, Head Start and Early Head Start, and public pre-k programs as a guide for welcoming and supporting families and children experiencing homelessness into these programs.

New Modules Being Finalized

Supporting Children and Families Experiencing Homelessness

An Interactive Learning
Series for
Early Childhood
Professionals

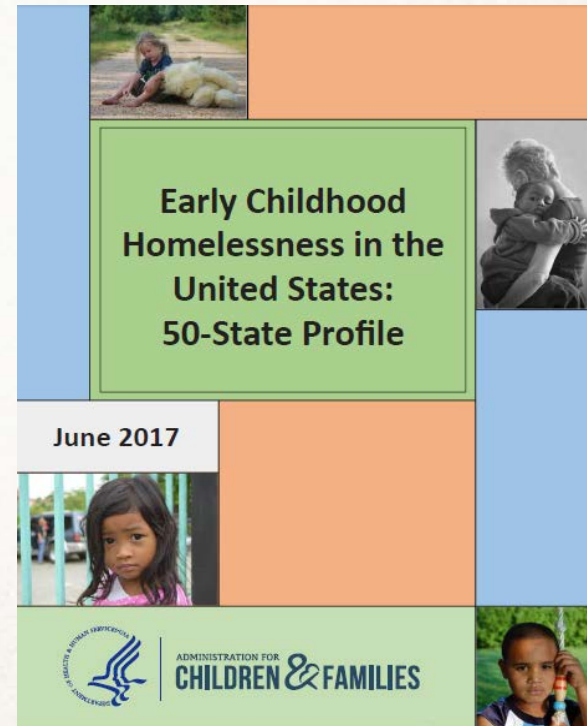
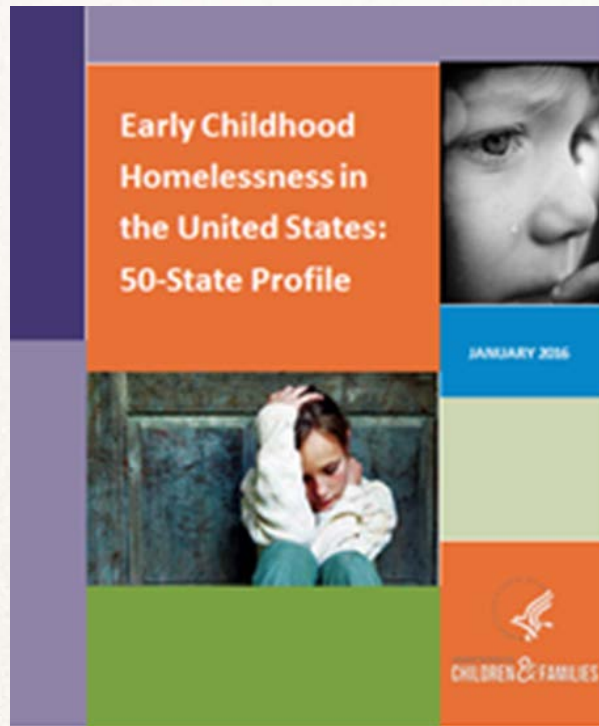
 NATIONAL CENTER ON
Early Childhood Parent, Family and Community Engagement



- The modules discuss the McKinney-Vento Act and relevant federal regulations for Head Start and Early Head Start programs and CCDF-funded programs.
- There are currently 8 modules in development.
- Each module takes approximately 30 minutes to complete. Users can spend as much or as little time as needed, depending on their level of experience.
- A Certificate of Completion is available for download upon completion of all sections of a module.

Early Childhood Homelessness in the United States: The 50-State Profile

The 50-state profile provides a snapshot of early childhood data available for children who are experiencing homelessness in each state.



Head Start Performance Standards & Child Care Development Fund Implementation

- HS/EHS programs may **reserve up to 3% of slots for homeless and foster children. [NAEHCY Early Childhood Committee Brief & Infographic.](#)**
- In keeping with the increased emphasis on the homeless population in the CCDBG law, the CCDF final rule adds “children experiencing homelessness” to the Priority for Services.



HHS-HUD-ED Early Childhood Homelessness Collaboration

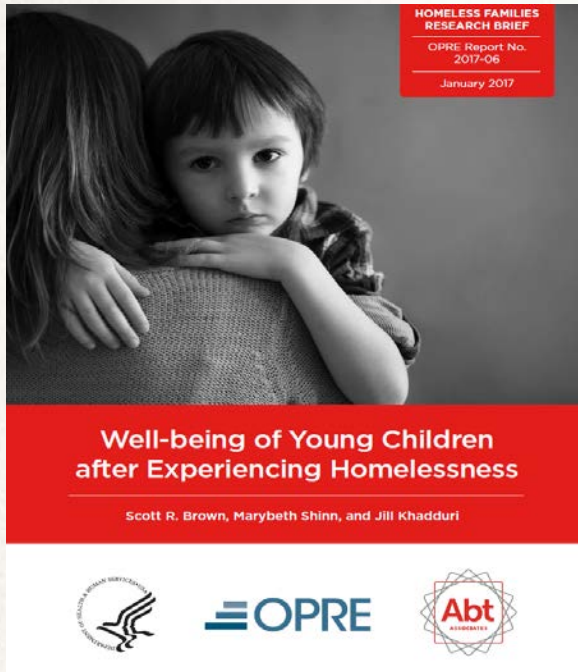
- Share recommendations on ways in which early childhood, homeless, and housing providers at the local and, in some cases, State levels can collaborate to provide safe, stable, and nurturing environments for pregnant women and families with young children who are experiencing or at risk of homelessness
 - **Three recommendations:**



- Support a Two-Generation Approach through Partnerships
- Enhance Early Childhood Integration with Coordinated Entry
- Improve, Leverage, and Integrate Early Childhood Homelessness Data



Well-being of Young Children after Experiencing Homelessness



Using data from the U.S. Department of Housing and Urban Development's Family Options Study, the brief examines the well-being of young children 20 months after staying in emergency homeless shelters with their families.

The brief is available on both OPRE's website and ASPE's website. See the brief series here at

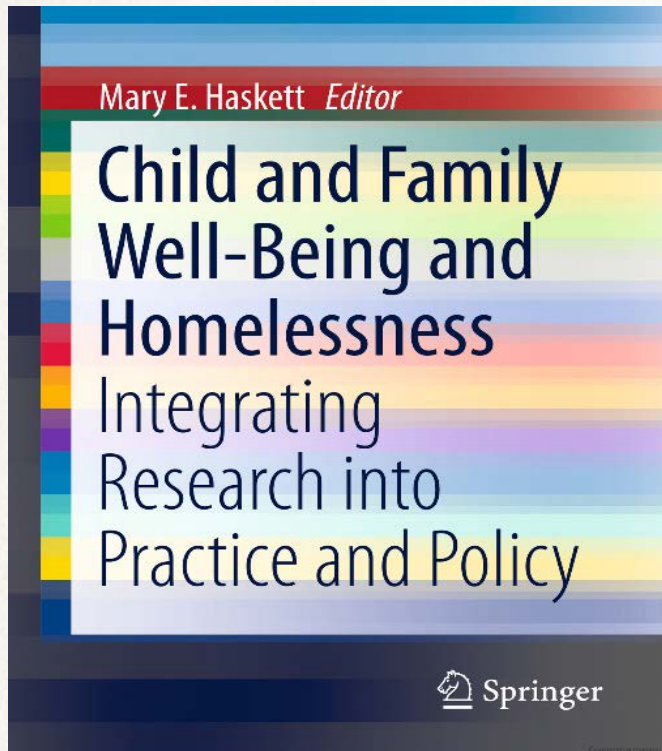
<https://www.acf.hhs.gov/opre/research/project/homeless-families-research-briefs>.

What was learned?

- At 20 month follow-up, children scored worse in pre-reading skills and had higher rates of behavior problems and early developmental delays compared to national norms for children their age
- Enrollment in early education and center-based care was lower for families who had experienced housing instability in the past 6 months, compared to those who had been stably housed
- Housing instability was not related to Head Start enrollment
- 3- and 4-year olds in Head Start or other early education and center-based care had stronger pre-math and pre-reading skills than those only in parental care



Integrating Research and Practice



<http://www.springer.com/us/book/9783319508856>

Featured topics include:

- Promoting positive parenting among homeless families.
- Innovative intervention, assessment, and service delivery models.
- Homeless children and early childhood care and education systems.
- Early Risers intervention & Community Action Targeting Children who are Homeless Project (Project CATCH).

New Lines of Research

- Early experiences are particularly impactful, and early family-centered prevention/intervention is particularly efficient and effective.
- Early life stress and toxic stress: context is everything.
- Parenting and Homelessness: Young Adult Mothers and Fathers in Unstable Housing Situations.



Even While Sleeping, Infants Track Family Conflict

What Sleeping Babies Hear: An fMRI Study of Interparental Conflict and Infants' Emotion Processing

Alice M. Graham,^{1,2} Philip A. Fisher,^{1,2} and Jennifer H. Pfeifer¹

¹Department of Psychology, University of Oregon

²Oregon Social Learning Center

Address correspondence to: Alice Graham,
Department of Psychology, University of
Oregon, 1227 University of Oregon,
Eugene, OR, 97403-1227, Phone: (541)
485-2711 ext. 1388,



Sesame Street Launches New Trauma Initiative



Building New HHS Leadership

- Steve Wagner, Acting Assistant Secretary
- Lynn Johnson (nominated as Assistant Secretary)
- Anna Pilato, Deputy Assistant Secretary for External Affairs
- Shannon Christian, Director Office of Child Care (OCC)
- Jerry Milner, Associate Commissioner at the Children's Bureau (CB)
- William Wubbenhorst, Associate Commissioner





Thank you for all you do for children and families!

Marsha Basloe

(202) 401-7241; Marsha.Basloe@acf.hhs.gov

<http://www.acf.hhs.gov/ece/interagency-projects/ece-services-for-homeless-children>



ADMINISTRATION FOR
16 CHILDREN & FAMILIES