

# CBO & LEA Partnerships:

What does success look like for our students experiencing homelessness?

**Jennifer Friend**  
CEO  
Project Hope Alliance

**Phil D'Agostino, Ed.D.**  
Assistant Superintendent, Educational Services,  
Brea Olinda Unified School District



# Challenges LEA's\* Face Serving Homeless Students

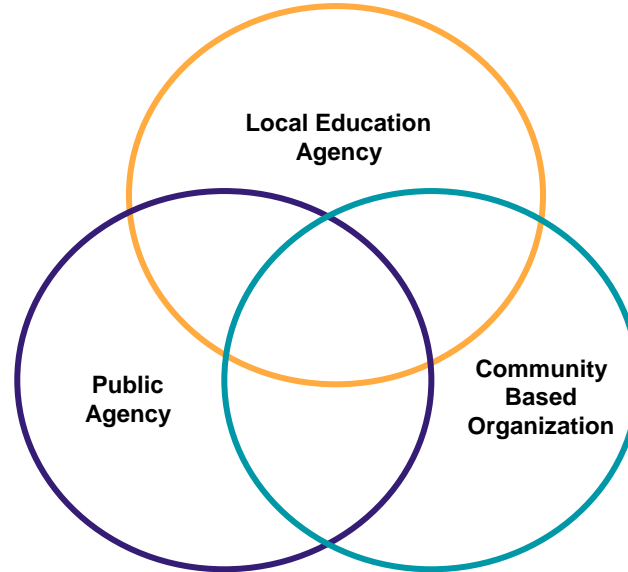
- Pre pandemic issues...
- The effects of the pandemic...
- Bureaucracies in general...
- Dynamics related to the institution of public education and its leadership...

\*Local Education Agencies



# The Value of Interagency Partnerships...

- Expertise and experience
- Credibility
- Efficiency
- Results – value added
- Results – future value



# Our Services

PHA seeks to establish long-term relationships with school districts to effectively connect directly into the educational system and become an asset to fellow educators and the kids who we serve.



ELEMENTARY



MIDDLE/HIGH SCHOOL



OLDER YOUTH



## On-site Case Management

A full-time case manager at school to serve kids experiencing homelessness. Upon enrollment into the program, case managers conduct a needs assessment using PHA's proprietary Hope Index, which covers 10 distinct domains:

-  Financial Stability
-  Basic Needs
-  Health and Safety
-  Parental and Family Support
-  Housing
-  Stable and Trusted Adult
-  Life Experiences and Passions
-  Future Vision and Direction
-  Social and Emotional Wellness
-  Education



## Trauma-informed Educator Training

Project Hope Alliance  
What we do and how does it end the cycle of homelessness?

Vicarious Trauma and Self Care  
What it is and how do we support our fellow educators while also caring for ourselves?

Trauma 101  
What is trauma and how does it manifest in youth?

McKinney Vento (ESSA)  
How does this law define homelessness and what resources do schools have to address it?

School-Base Strategies  
How do we identify students who may be experiencing homelessness and associated trauma?



## Strategic Planning

Thought partnership with PHA to include, but not limited to the following:

Proper funding allocation

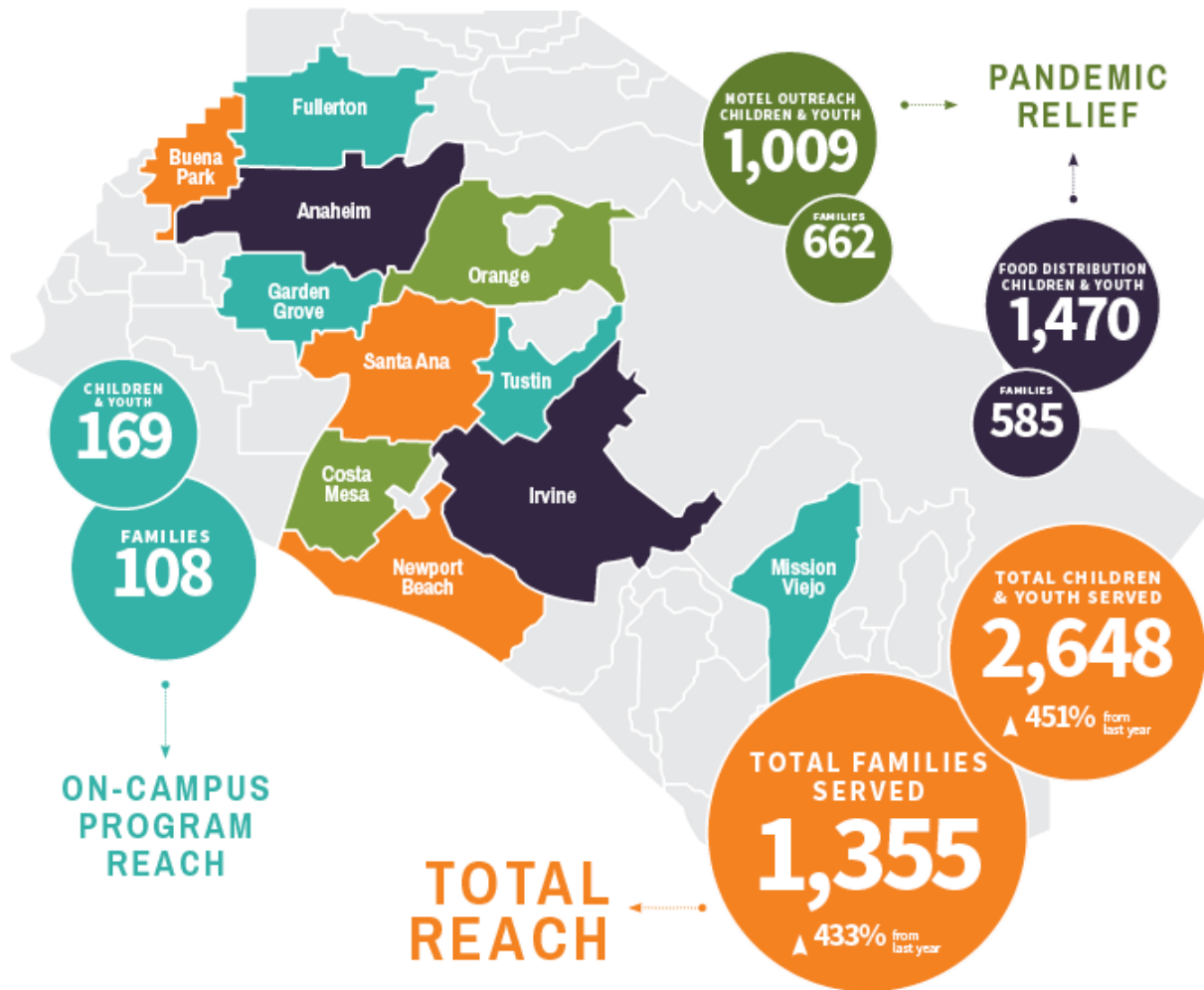
Prioritizing the needs of students

Guidance and feedback on current approaches



## Group Work

We provide a social-emotional and life skills program for K-12th grade children and youth experiencing homelessness. The curriculum is designed and tailored to deliver soft skill concepts in teachable and interactive ways.



# HOPE INDEX



SOCIAL & EMOTIONAL WELLNESS



EDUCATION



PARENTAL FAMILY SUPPORT



HOUSING



FINANCIAL STABILITY



BASIC NEEDS



HEALTH & SAFETY



STABLE TRUSTED ADULT



LIFE EXPERIENCES & PASSIONS



FUTURE VISION & DIRECTION



**HIGH SCHOOL GRADUATION RATES  
FOR STUDENTS EXPERIENCING HOMELESSNESS:**

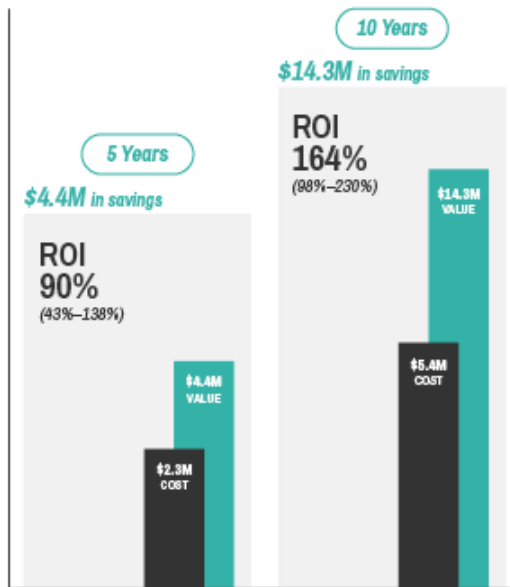
**CALIFORNIA 69%**

**PROJECT HOPE ALLIANCE 84%**

*Graduating youth contribute an additional  
**\$75,000 per year to***

**\$100 INVESTED IN PHA'S PREVENTION PROGRAM  
GENERATES \$264 IN VALUE  
FOR OUR COMMUNITY**

**PROJECT HOPE ALLIANCE  
WILL SAVE ORANGE COUNTY  
**\$14.3M by 2030****



Note: Range of value estimates at ±25%

# Being successful when working within the culture of public schools...

- Have a champion principal
- It's all about relationships...
- Honesty, transparency, and clarity on responsibilities and expectations
- Demonstrate value...
- Be prepared to take one step back to take two forward...
- Create opportunities to build trust
- Know who the kings and queens are...
- Build shared language
- Patience is needed when working with LEA's...
- So is persistence...
- Be adaptable...

