

WE ARE NOT ALL ALIKE: THE INTERSECTIONALITY OF HOMELESSNESS

Facilitator:
Nichole Murray
Co-Facilitator: Blanca Torres





What causes homelessness?



SOCIAL IDENTITIES

- Can be fluid
- Sense of who you are based on group membership (Tajfel, 1979)
- Can be a physical, social, mental, spiritual marker
- Multiple
- Overall function of the self (how we see the world)

OBJECTIVE

- WHAT IS A SALIENT IDENTITY? AND HOW IDENTITIES SHAPE OUR EXPERIENCES
- DEFINE AND UNDERSTAND INTERSECTIONALITY
- EXAMINE DIFFERENCE BETWEEN EQUALITY AND EQUITY
- STRATEGIES TO REDUCE BARRIERS BASED ON IDENTITY

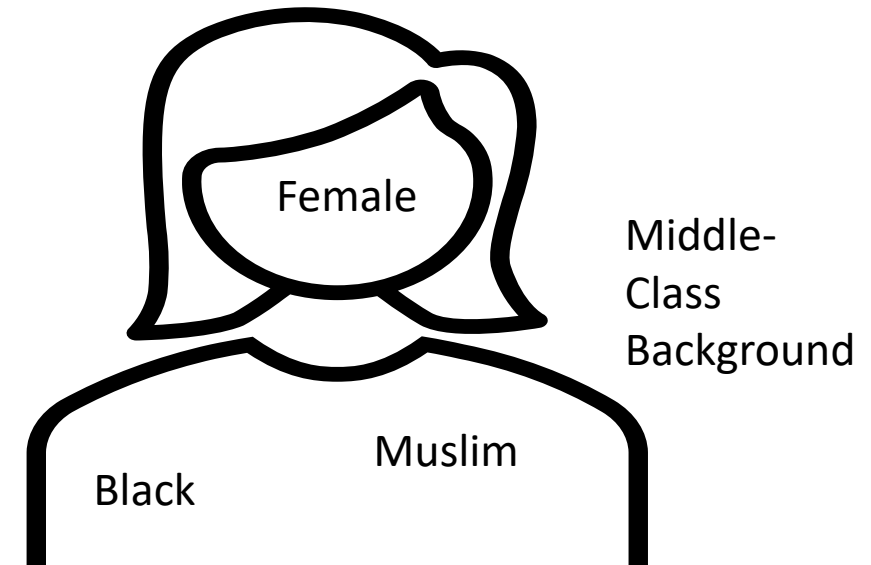
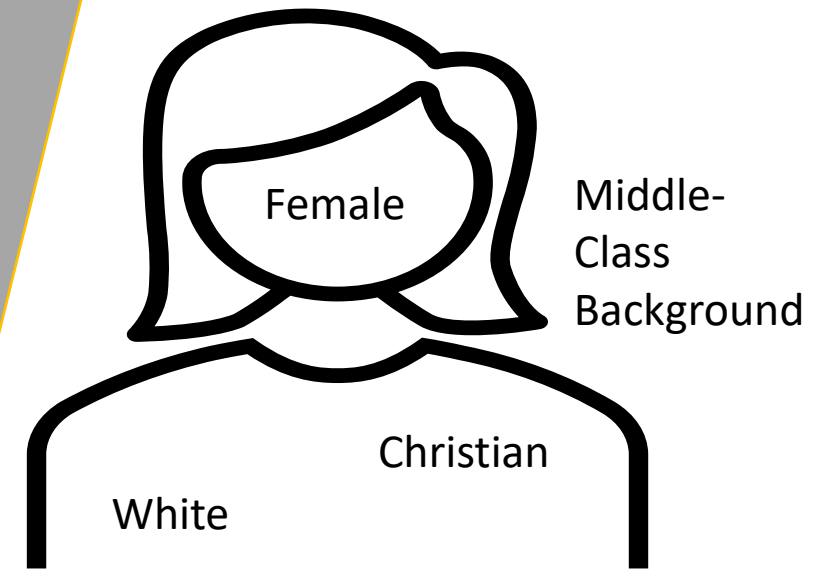


How many
identities
can you
name?

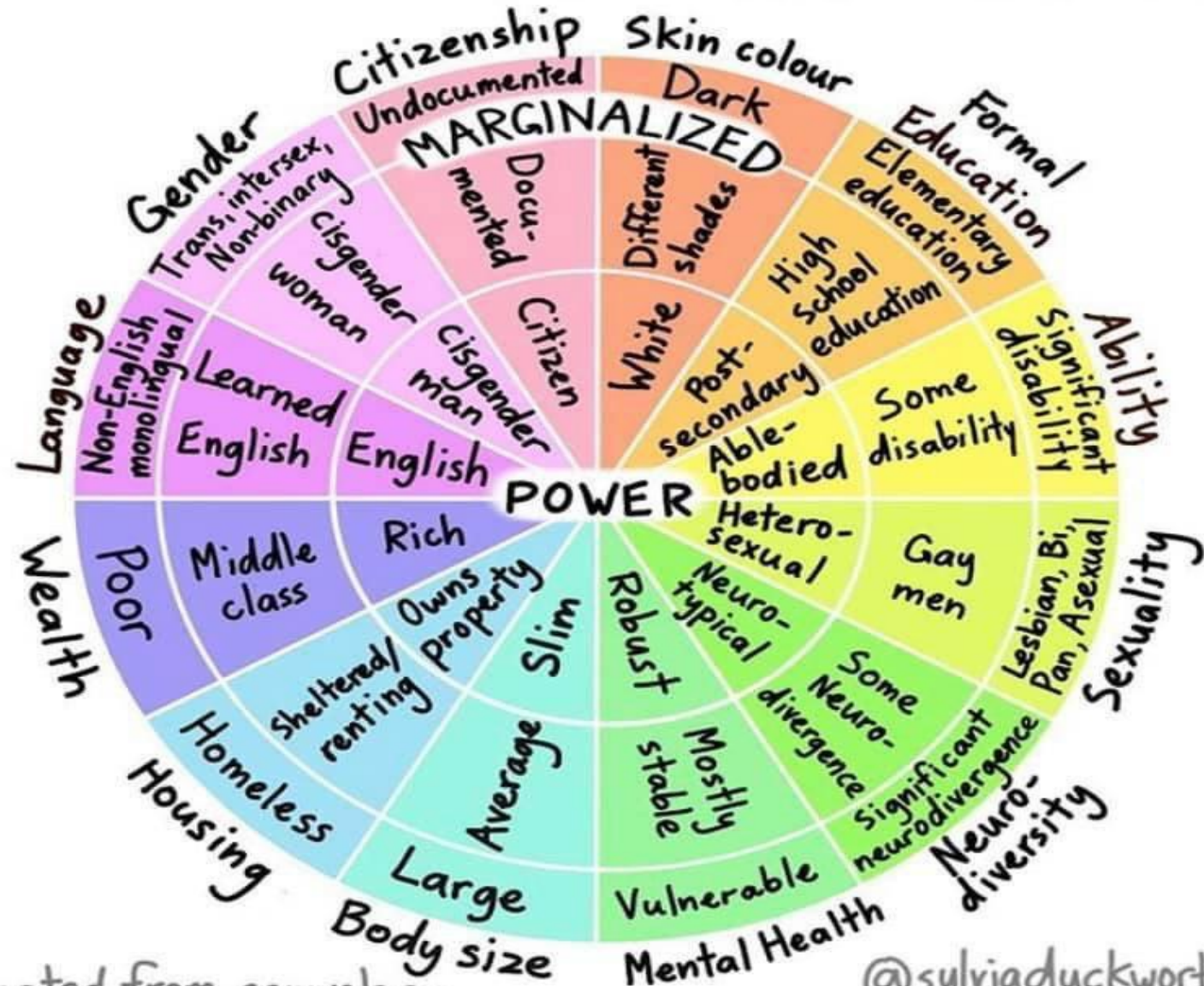
- Gender
 - Ethnicity
 - Race
 - Religion
 - Socioeconomic Status
 - Language
 - Marital/Relationship Status
 - Parent or Childless
 - Family Size and Composition
 - Sexual Orientation
 - Professional Associations
-
- Political Affiliation
 - Physical Health
 - Mental Health
 - Location (Regional/City)
 - Nationality Origin/Citizenship
 - Tribal or Indigenous Affiliation
 - School
 - Body Size/Type
 - Age
 - Education
 - Career

Intersectionality

- Experience social identities collectively and simultaneously, not individually
- How multiple identities interact with oppression, domination, and discrimination
- Historical contexts around power, privilege, and oppression
- People experiencing homelessness do not share the same level of discrimination
- Can have privileged groups, numerous marginalized groups, or a combination of both (privileged and marginalized)



WHEEL OF POWER/PRIVILEGE



Adapted from ccrweb.ca

@sylvriaduckworth

And the Data Says.....

120%

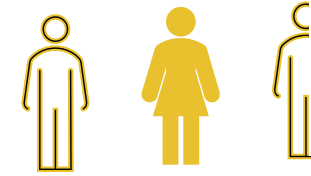
Higher Risk of LGBTQ young adults facing homelessness compared to heterosexual and cisgender youth

https://voicesofyouthcount.org/wp-content/uploads/2017/11/ChapinHall_VoYC_NationalReport_Final.pdf



But What the Data Doesn't Says.....

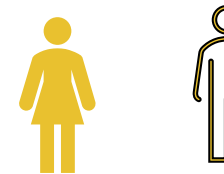
Black Students
2.67 Times more likely to experience homelessness



White Students



Latinx Students
1.68 Times more likely to experience homelessness



White Students



<https://www.nn4youth.org/wp-content/uploads/YOC-HCYA.pdf>

What is the risk if you are Black or Latinx and LGBTQ?

Historical Context

The background of the slide features five raised fists of various skin tones (white, light brown, dark brown, black, and light brown) against a light blue and white circular pattern. The fists are arranged in a slightly overlapping, horizontal line across the center of the slide.

- Racism
- Sexism
- Ablism
- Sexual Orientation Discrimination
- Classism
- Xenophobia
- Lack of Job/Employment
- Poor Funding for School
- Housing Discrimination
- Linguistic/Language
- Citizenship
- Health Care/Quality
- (In)Justice System
- Foster Care System

Homelessness encompasses more than just an issue of housing. It is an equity and social justice issue!

EQUALITY
SAMENESS



EQUITY
FAIRNESS



Practical Action Steps

Talk with people from
oppressed groups....And
Listen!!

Learn about other cultures

Practice cultural humility

*Encourage people from
oppressed groups to
exercise their political and
civic power!
(Empowerment)

Connect and partner with
diverse organizations

Create a culture of
inclusiveness and
belonging



Onedegreehire.com



info@onedegreehire.com

Or

murrayenichole@gmail.com



www.linkedin.com/in/nicholemurrayphd

Nichole Murray, M.Ed., Ph.D.

Contact, Connect, Communicate

Feel free to contact me for more resources or information